

Glacier™ Milk cooling tank for 9,000 to 30,000 liters

BouMatic Glacier™ milk-cooling tanks maintain the very highest quality. Each model is designed to accommodate all types of milking systems. The coolers are available in a range of sizes and dimensions and can be adapted to requirements with regard to equipment positioning and connections.

The Glacier™ Laser is the largest of the BouMatic coolers. It is equipped with a cooling system according to requirements, as well as the Glacier™ Controller with a fully automatic cleaning system.

The condensing unit is designed to give the very best operating economy. And with its exclusive spray head, reliable dosage pumps and flexible range of cleaning programs, the cleaning system is regarded as the best in the market.

The tank is fully controlled, supervised and registered by the Glacier™ Controller.

For sizes exceeding 14,000 liters, the tank comes equipped with twin spray heads, pumps and stirrers.



Facts about the Glacier™ Laser milk cooling tank

The Glacier™ Laser comes in nine different volumes and can be adapted to requirements with regard to equipment positioning and connections. For sizes exceeding 14,000 liters, the tank comes equipped with twin spray heads, pumps and stirrers.

The milk-cooling tank is built entirely of stainless steel and recyclable materials. It rests on a frame with legs for simple transportation.



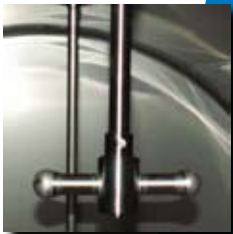
A cooling system that cuts operating costs

- Designed for cost-efficient operation when the milk is cooling.
- The cooling system is made up of different modules, which means that the condensing unit can always be adapted to requirements.
- Several evaporators help ensure optimal milk-cooling.
- Fitted with the best refrigerant for milk-cooling tanks.
- All components maintain top quality.



A control system that controls, supervises and registers operation

- The Glacier™ Controller controls, supervises and registers cooling and cleaning systems and stirring performance.
- Cooling performance is registered continuously.
- The stirring blade can be run at two speeds to make the milk-stirring process as gentle as possible.
- The cleaning system has 8 different stages and three programs to choose from for maximum flexibility.
- Dosage pumps ensure correct dosage every time and prevent overdosing of detergent.
- After each cleaning cycle, the pump unit is automatically drained of water.
- The built-in alarm system triggers automatically in the event of malfunction.
- Temperatures can be traced back in time, e.g. approx. 60 days



Spray head rotates 360°

- Regarded as the best spray head in the market.
- 360° rotation for thorough cleaning.
- Ball-bearings fitted for friction-free rotation.



Volume Litres	Width W	Length (without condensing unit)	Length L	Height H	Weight kg
9000	2040	4350	2350	2425	1170
10.000	2040	4750	2350	2430	1300
12.000	2040	5530	2350	2440	1550
14.000	2240	5400	2600	2690	1730
16.000	2240	6060	2600	2710	1965
18.000	2240	6710	2600	2720	2210
20.000	2450	6350	2780	2875	2350
26.000	2450	8000	2780	2900	2740
30.000	2450	9100	2780	2930	3200

The specified dimensions (mm) include ladder, controller and agitator.
 Height (HT) = Normal transport height + 65mm for skid pan.
 Mounting Height (HM) = Maximum size at tank angle of 3%.
 Removing the agitator will reduce overall height by approx. 250 mm.

Manhole cover can be opened with one hand

- One-hand, side-swivel opening.

Your dealer:

